

# Indooroopilly Heritage

## Life Members

### INDOOROOPILLY GOLF CLUB

#### LIFE MEMBERS - Article 4 (b)

##### MEMBERS

R.V. PERKINS  
W.G. DUNCAN  
B. GILL  
J.F. PYLE  
S.H. PHILLIPS  
G. SEAMAN  
R.H. WHILLANS  
A.J. SAUNDERS  
P.J. DAVIES  
J.H. SURMAN  
O.G. ECKHARDT  
J.E. LILEY  
G. GUNDERSON

##### ASSOCIATES

MRS E.A. GILL  
MISS G. MCLEOD  
MRS F.B. CHANDLER  
LADY HOLT  
MRS E.M. GODBOLD  
MRS A.T. LONGLAND  
MRS MADGE LILEY  
MRS N.E. BARROW  
MRS B.E. PYLE



# Indooroopilly Heritage

## Life Members



ISOBEL GILL

Mrs Isobel Gill was granted honorary life membership in 1938 after the death of her husband, Ernest Gill, who was the first full-time Secretary of Indooroopilly.

In 1933 the Gill family travelled to England so that daughter Laurel could attend a dancing academy in London. During that visit Mrs Gill purchased a beautiful Georgian silver cup which she donated to the associates. The Associates Goblet has been competed for since 1934.

REG PERKINS

Reg Perkins was elected to life membership in 1957 after 22 years of committee service, including being Captain from 1940-44 and President from 1951-53.

He was an adept pennant player whose immaculate clothing matched his golf and he is acknowledged as the president who made members take matters of dress seriously.

In 1958 Reg donated the R.V. Perkins trophy (11-18 handicap) to be played in conjunction with the club championship



# Indooroopilly Heritage

## Life Members

### BILL DUNCAN

Bill Duncan was Treasurer 1944-45 and President 1946-50 during the difficult early postwar years.

His son, R.P. (Rolley) Duncan was a member of the 1946 Queensland team and an A grade pennant player for Indooroopilly.

Bill Duncan was also President of the Queensland Golf Council in the post war years.

In 1958 he donated the W.G. Duncan Trophy (19-27 handicap) to be played in conjunction with the club championship.



### GERTRUDE McLEOD

Gertrude McLeod was elected the first Associates President in 1945. She also served as President of the Qld Ladies Golf Union for 30 years and President of the Australian Ladies Golf Union from 1949 to 1954. McLeod Country Club is named in her honour.



# Indooroopilly Heritage

## Life Members



BUDGE GILL

Budge was elected as a life member of Indooroopilly in 1971.

His contribution to golf and the club is outlined in Champion Golfers.

JACK PYLE

Jack was a top-line tennis player as a young man, representing Queensland prior to and after the Second World War, before pursuing a career as a professional coach.

He started playing golf at Victoria Park and joined Indooroopilly in 1950. He recalled one day with tennis friends at Victoria Park playing 18 holes before breakfast, 18 holes before lunch and another 18 holes before walking home for dinner.

Jack joined the committee in 1958, and was Captain in 1960 and President in 1963-64, overseeing the opening of the first 18 holes at Long Pocket.

He was granted life membership of Indooroopilly in 1976. The QGU also awarded him life membership in 1978 after his service as delegate from 1961-78 and member of the executive from 1963-66 and 1971-78.



# Indooroopilly Heritage

## Life Members



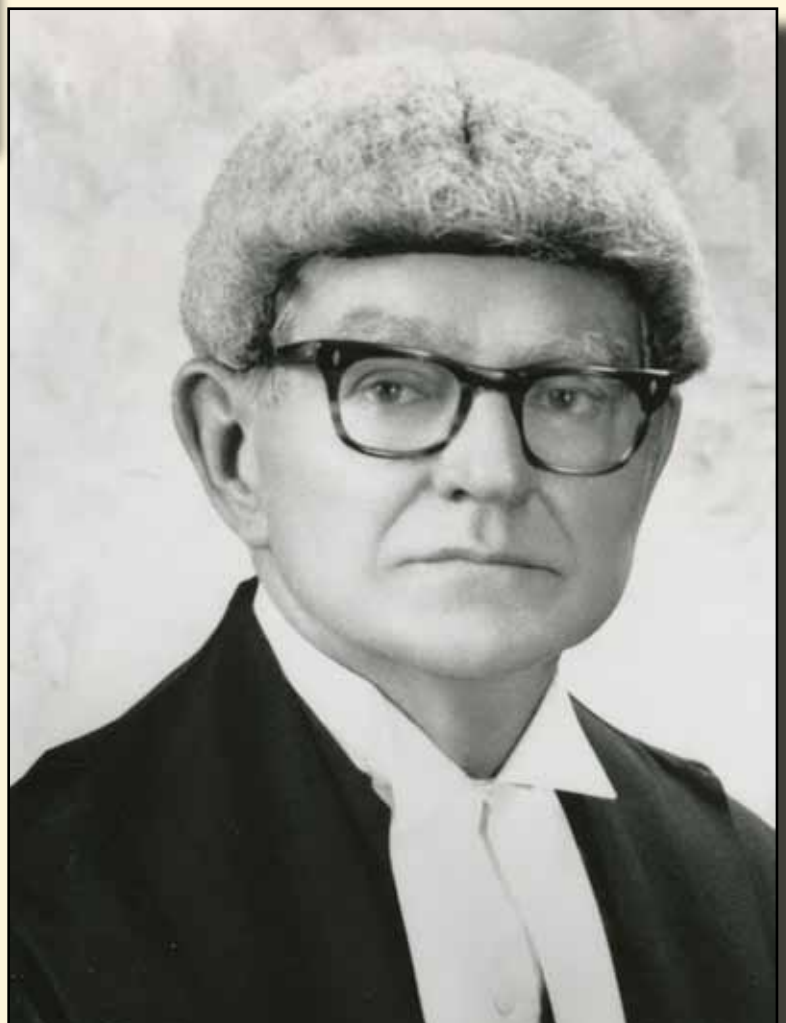
SYD PHILLIPS

Syd Phillips was a foundation member of the club. He played in the winning 1936 "A" pennant team and was one of the very few members who saw the opening of the St Lucia course in 1926 and the new clubhouse at Long Pocket in 1985.

GEORGE SEAMAN

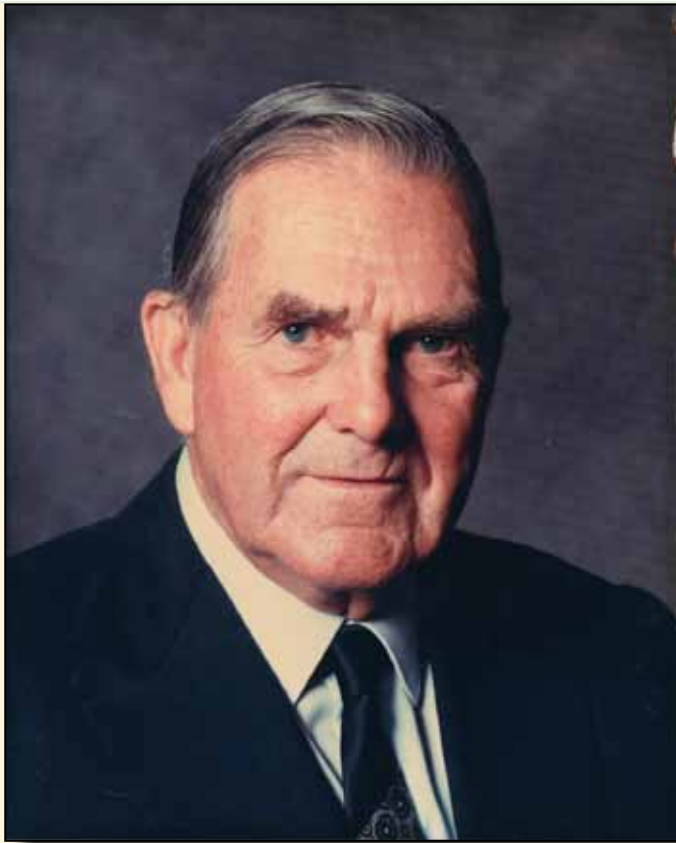
Like Syd Phillips, George Seaman was a foundation member of the club and played in the winning 1936 "A" pennant team. He was Club Champion in 1930 and 1932 and Club Captain from 1938-39.

Judge Seaman had a long and successful legal career and was present at the opening of the new clubhouse at Long Pocket in 1985.



# Indooroopilly Heritage

## Life Members



HAL WHILLANS

Hal was a champion tennis player in his youth. During World War II he flew Spitfires in Europe. He joined Indooroopilly in 1943 and was a pennant player from 1950-64.

In 1964 he moved to Hong Kong, during which time he captained and managed the Hong Kong Eisenhower Trophy golf team for the 1968 tournament played in Melbourne.

In 1976 he was co-opted as honorary clerk of works for three years during construction of the New Course (later called the East Course) at Long Pocket.

Hal was awarded life membership in 1979.

ROSA CHANDLER

Rosa Chandler was Associates Captain from 1956-58, President 1959-62, QLGU Vice-President 1963-67 and QLGU President 1968-71. Her father was life member W.G. Duncan.

The C Grade championship trophy is named in her honour.



# Indooroopilly Heritage

## Life Members



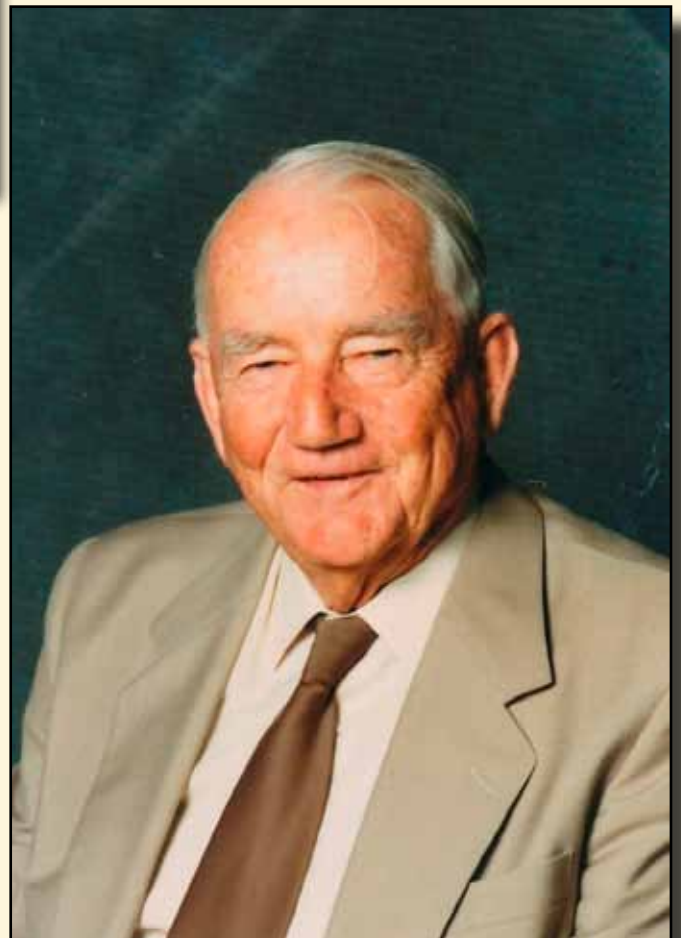
AUDREY HOLT

Lady Holt was elected to life membership in 1981. Her contribution to golf and the club is outlined in Champion Golfers.

ALEX SAUNDERS

Alex Saunders flew Lancasters over occupied Europe during World War II. Flying as a member of the famous Pathfinders, his plane crash-landed in farming land during a daytime raid over occupied France. Hidden by the French underground in a haystack he rode a bicycle around the countryside until he was returned to England 19 days later.

Alex had a career in accountancy and real estate, joining the club in 1963. He became a member of committee in 1972 and was President in 1977-82. His committee oversaw the challenge of transferring Indooroopilly to its new home at Long Pocket and finding the means to build a new clubhouse and another golf course.



# Indooroopilly Heritage

## Life Members



PETER DAVIES

Peter Davies was elected to life membership in 1983. His contribution to golf and the club is outlined in *Champion Golfers*.

MARJORIE GODBOLD

Marjorie Godbold joined Indooroopilly in 1932. She was introduced to golf by her lifelong friend Nan Blaiklok. They took lessons from Tom Southcombe at two shillings and sixpence a lesson.

Marjorie played off single figures and was Associates' Champion in 1937 – the following day she was rushed to hospital to have her appendix removed.

Marjorie served as associates' Treasurer for two years, Secretary of the associates' committee for fourteen years and delegate to the QLGU for eight years.

The B Grade championship trophy is named in her honour.





# Indooroopilly Heritage

## Life Members



*Marjorie Godbold on the right and Audrey Holt on the left watch competitors in the 1950 Australian Ladies Amateur Championship at Royal Queensland.*



# Indooroopilly Heritage

## Life Members



JACK SURMAN

Jack started as a caddy with the club in 1927 at which time Indooroopilly had 40 to 50 caddies. They would sit on benches in the shed and wait for the professional to call them by their number. Jack's caddy badge was number three and it is displayed in the club's trophy cabinet. He caddied mainly for early committee member Fred Ayres for two shillings or one and six pence.

He was hired as a junior groundsman in 1935. Up until the late 1930s all construction work was done with two horses – Ginger and Digger – and a plough and scoops. Horses were used to cut through the rough and the cut grass was piled up with a horse-drawn hay rake and burnt. Jack was heavily involved in constructing both courses at Long Pocket – he spent fourteen hours a day, seven days a week for seven weeks operating a mobile watering system during the 1968-69 drought.

On the final evening at St Lucia in 1985 Jack was made a life member after 53 years at IGC - eight as caddie, five as junior groundsman, fifteen as groundskeeper and twenty five as head green-keeper. His son Neil carried on the family tradition and was course superintendent at Long Pocket for a number of years.



GEORGE ECKHARDT

George Eckhardt joined the club in 1963, was elected to committee in 1971 and served as Vice-captain from 1977-78. He resigned from his legal practice at the end of 1978 on medical advice but assisted the club with legal matters afterwards. His great contribution to the club in respect of the various legal battles during the previous decade was rewarded by life membership in 1987.



# Indooroopilly Heritage

## Life Members



MARION LONGLAND

Marion's father, Vincent Jessup, attended the meeting to elect the club's first committee and the whole family was present at the club's opening ceremony in 1926. Marion and her sister Mildred were signed up as associate members.

She spent eleven years on the social committee, nine years as convenor.

MADGE LILEY

Madge joined Indooroopilly in 1957.

She was state Handicap Manager 1973-77 and QLGU Secretary 1978-81. The state office was her home in Gilgandra Street. Her children had left home so there was room to throw the hundreds of entry forms etc on the various beds! Golf Queensland later employed staff to do what Madge and her fellow volunteers did in those days.

Madge won the Bruce Phillips Cup with husband Jim in 1985 and the Four Ball Cup with daughter Helen in 1993.

She served on the associates committee as Handicap Manager in 1964, Secretary 1966-68, Vice-President 1986 and President 1987-89 and was awarded life membership in 2000.



# Indooroopilly Heritage

## Life Members



*Mother and daughter Four Ball Cup winners in 1993  
– Helen Himstedt and Madge Liley.*

### NANCY BARROW

Nan joined the club in 1951.

She served on QLGU committees for a number of years in the 1950s, '60s and '70s. During the 1960s she travelled extensively throughout the state doing SS ratings and also acted as the official starter of all state events. She was QLGU assistant secretary from 1972-77, Indooroopilly's delegate to QLGU 1959-64 & 1966-69, Associates Captain 1959-61 and 1964, and Associates President 1966-68.

Nan Barrow was awarded life membership in 2000.



# Indooroopilly Heritage

## Life Members



JIM LILEY

Jim Liley was awarded life membership in 2002 in recognition of his long-term service to Brisbane and District Golf Association and to Indooroopilly.

Jim served on the executive committee of B&DGA for eighteen years from 1978 until the end of 1995, including the positions of Vice-president from 1979-80 and President from 1980-82.

He was a member of the Indooroopilly committee from 1973 until 1980, including being Captain from 1978-80.

Jim and his wife Madge were the first husband and wife life members. The Jim and Madge Liley Trophy event was instituted in 2000 to celebrate their contribution to the club.

GEORGE GUNDERSON

George Gunderson was elected to life membership in 2004. His contribution to the club is outlined in Champion Golfers.



# Indooroopilly Heritage

## Life Members

### BARBARA PYLE

Barbara was married to life member, Jack Pyle. She joined the club in 1953 and was a pennant representative for many years.

Barbara served on the QLGU match committee for five years and was Associates' Captain from 1971-73 and Vice-president in 1975.

In 1988 she was responsible for starting the IGC Bridge Club, which has allowed many members to maintain contact with Indooroopilly after they have retired from playing golf.

Barbara was awarded life membership in 2005.



*Barbara Pyle – 1953 photograph – the year she joined the club.*



**NOTE:** The basis of the information provided has been extracted from the booklet 'A Half Century of Golf 1926-1976 at Indooroopilly Golf Club' by Jack Lunn and the later update by Ian Arnold (unpublished manuscript).

